



# WORKPLACE TESTING SIMPLIFIED

Complete testing solutions for an  
alcohol and drug-safe workforce



# We've got you covered

## AUTOMATED DRUG TESTING SOLUTIONS

Save time, money, and resources with a transformative and networked approach to workplace testing. eScreen™ managed solutions allow employers to go automated and paperless with a web-based platform, that offers total visibility of test data from start to finish.

## EXPANDED SUITE OF RAPID SCREENING DEVICES

Rapid screening results at the point of collection enable you to make informed decisions about substance misuse or abuse quickly. Our popular rapid testing devices include a wide range of drug screen and breath alcohol test devices.

## COMPREHENSIVE LABORATORY SERVICES

We offer world-class laboratory services through a global network of specialty laboratories, including 2 in the United States that are SAMHSA certified.

## ESSENTIAL TEST RESOURCES

- Wide range of reporting and data management solutions to fit your organization, utilizing our reporting website
- Experienced client service representatives to assist and support your entire organization
- Extensive library of resources for education and training
- Rigorous quality standards ensure you receive a dependable product and accurate result
- Access to nationally recognized toxicologists, expert witnesses, and litigation support services





# Extensive testing services and global presence

Our global footprint positions us at the forefront of toxicology innovation. With a comprehensive range of drug screening solutions to meet unique needs, we equip our customers to promote safety, health, and wellbeing.



10 MILLION LABORATORY TESTS  
PERFORMED EACH YEAR FOR MORE  
THAN 100,000 GLOBAL CLIENTS



100 MILLION DRUG SCREENING  
DEVICES SOLD EACH YEAR



THOUSANDS OF CONNECTED  
COLLECTION SITES IN OUR  
US CLINIC NETWORK



# Helping you build a safer workplace

We provide workplace drug test solutions that are tailored around employee management activities and are validated by years of experience.

With a suite of detection tools, we help you automate drug testing—linking supervisors, collection sites, and employees. Less administration on your part means more time to focus on getting an employee on the job.

## ESSENTIAL DRUG TESTING SOLUTIONS

Our screening devices, laboratory services, and comprehensive solutions are ideal for pre-employment testing programs, post-accident, random testing, reasonable suspicion, and much more.

Our flexible and robust suite of solutions range from automated managed services and rapid test devices to laboratory testing for federally regulated employees (SAMHSA certified). With complete IT integration, data management tools, and product training certifications we offer an end to end solution for a drug safe workplace.

### Suite of drug screening devices

Rapid screening results at the point of collection enable you to make informed decisions about substance misuse or abuse.



## RAPID SCREENING DEVICES

- Choose from hundreds of product SKUs for a comprehensive, convenient testing program
- Rigorous manufacturing standards ensure you receive an effective drug test device
- Advanced instrumented screening options

## LABORATORY SERVICES

- Wide range of drug and alcohol test panels available for urine, oral fluid, and hair specimens
- Specialty tests for ethyl glucuronide/ethyl sulfate (EtG/EtS) alcohol, expanded opiates, synthetic marijuana (K2/Spice), designer stimulants (bath salts), and more
- Highly qualified toxicologists perform testing with state-of-the-art equipment, including GC-MS<sup>5</sup> and LC-MS/MS<sup>6</sup>
- 6 global laboratories independently certified by accrediting bodies, including 2 SAMHSA<sup>4</sup> certified in the United States

## MANAGED DRUG SCREENING SERVICES

- Instrument read expanded panel drug screening provided through a nationwide network of thousands of connected clinic facilities
- Online paperless scheduling and test administration processes with streamlined collection and chain of custody workflows you receive an effective drug test device
- Automated drug testing interruption and secure reporting with negative results reported in 15 minutes

# Workplace drug testing has never been easier

From the initial consultation to a final drug test report, our closed-loop process will help lighten the workload for your organization. Our programs help you automate your processes while encouraging responsibility, driving standards of behavior, and mitigating risk.

## 1. CONSULTATION

Tailor a drug test program that's right for you

## 2. TEST SCHEDULING

Client enters donor information, date, location, and test type

## 3. DONOR COLLECTION

Donor arrives at Collection Site, and Collector performs collection with a printed or electronic CCF<sup>1</sup> form

## 4. RAPID SCREENING

Rapid drug test performed and results evaluated

## 5. LABORATORY TESTING

Specimen accessioned and testing begins—negative results available for reporting in 24 hours<sup>2</sup>

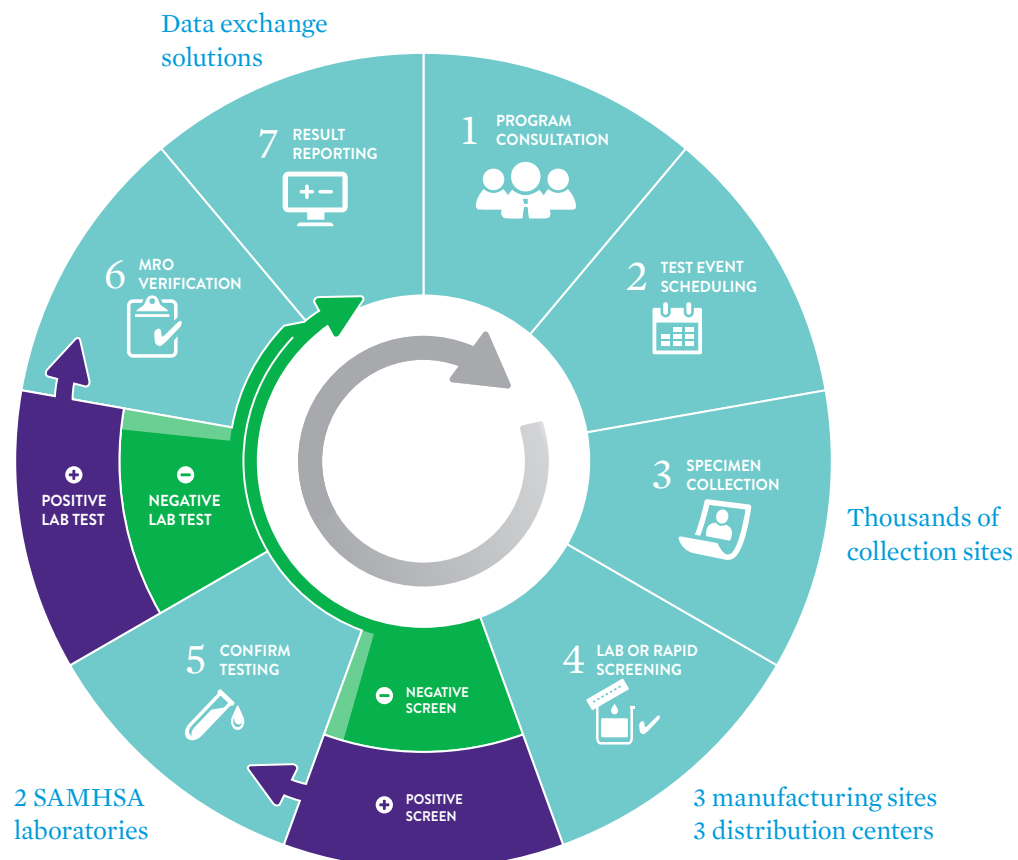
## 6. MRO VERIFICATION

Positive results verified by MRO<sup>3</sup>

## 7. RESULT REPORTING

Positive results verified via the portal

Data exchange solutions—interface options for all major human resource information systems (HRIS)



# Employers use testing to limit safety concerns and to maintain a healthy, drug-free workforce

## Contact us to discuss your drug and alcohol testing policy for your organization.

**TO LEARN MORE, CALL**  
**LABORATORY AND MANAGED SERVICES: 800-881-0722**  
**PRODUCTS: 800-340-4029**

1. Electronic Custody and Control Form (eCCF)
2. From time of specimen receipt
3. Medical Review Officer (MRO)
4. Substance Abuse and Mental Health Services Administration (SAMHSA)
5. Gas chromatography-mass spectrometry (GC-MS)
6. Liquid chromatography-tandem mass spectrometry (LC-MS/MS)

© 2020 Abbott. All rights reserved. All trademarks referenced are trademarks of either the Abbott group of companies or their respective owners. Any photos displayed are for illustrative purposes only. Any person depicted in such photos is a model. MKT50275 REV3 2/20

